

Student Exchange Program of KNU [Chuncheon Campus]

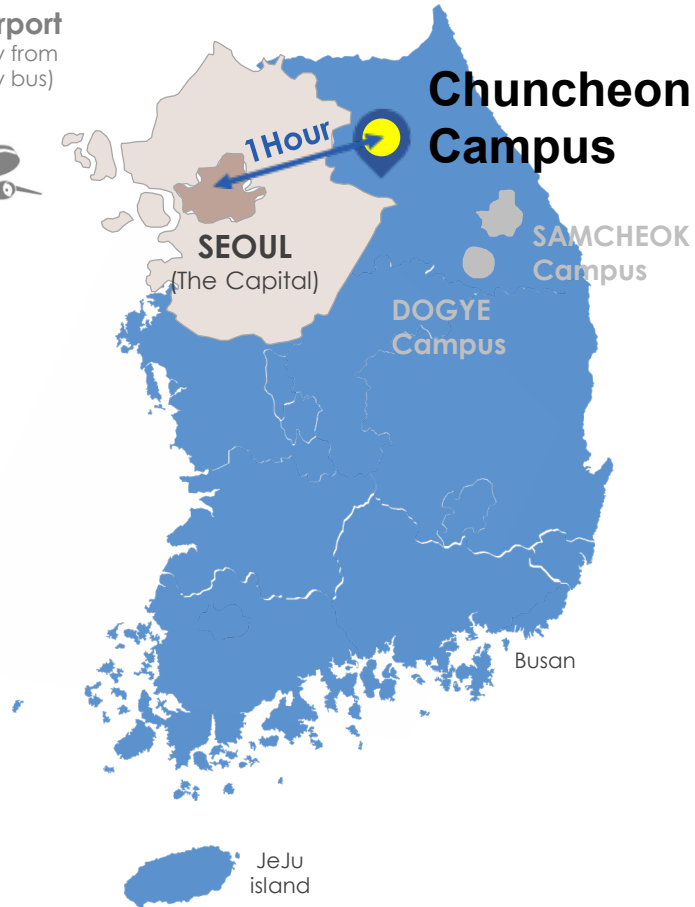


강원대학교 춘천캠퍼스 교환학생 프로그램
江原大学 春川校区-交换生项目



KANGWON NATIONAL UNIVERSITY

Incheon Airport
(2 h 30 m Away from
Chuncheon by bus)



Chuncheon Campus

At a Glance

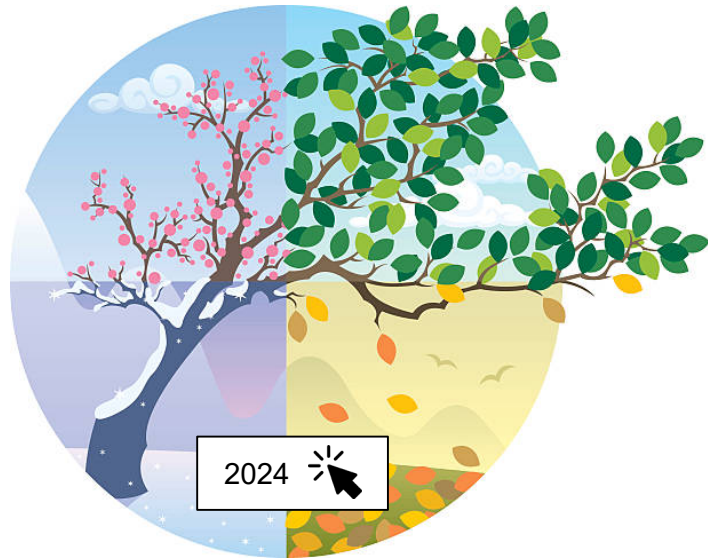


- Establish in 1947, KNU is one of South Korea's 10 flagship national universities.
- 「Glocal University 30 project」 winner
(\$75.6 million funding by government for 2024-2028)
- EQAS university accredited by Korean Ministry of Education
(International Education Quality Assurance System)
- 「The Asia University Rankings 2023」 Ranking 401-500, 28th in Korea

3	Campuses	18	Colleges
128	Department / Majors	49	Research Institutes
31,500	Students	1,950	Faculty and Staff



Basics for student exchanges



Academic Calendar

- [Spring Semester] Early March – Mid-June
- [Summer Break] Late June - Late August
- [Fall Semester] Early September - Late December
- [Winter Break] Late December - Late February



Deadlines

- **Nomination by staff of home university**

[Spring Semester] October 20

[Fall Semester] April 20



Nomination Form

- **Student's online application**

[Spring Semester] November 10

[Fall Semester] May 10

Eligibility



- Able to understand classes in Korean or English
- Have completed at least two semesters at their home university
- GPA of 2.7 or higher, out of a 4.0 scale (or 3.0 out of 4.5)



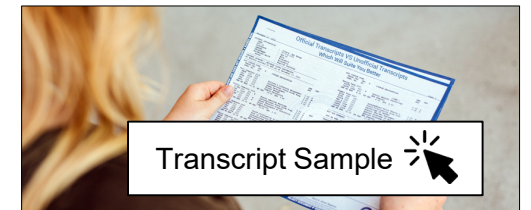
Study Period

- One or two semesters

Tuition Waiver



Transcript



- KNU will email every student's transcript(English version) to their home university after the end of each semester.
- Students can view and print out their transcript themselves using 'K-Cloud' web portal.

Academic information

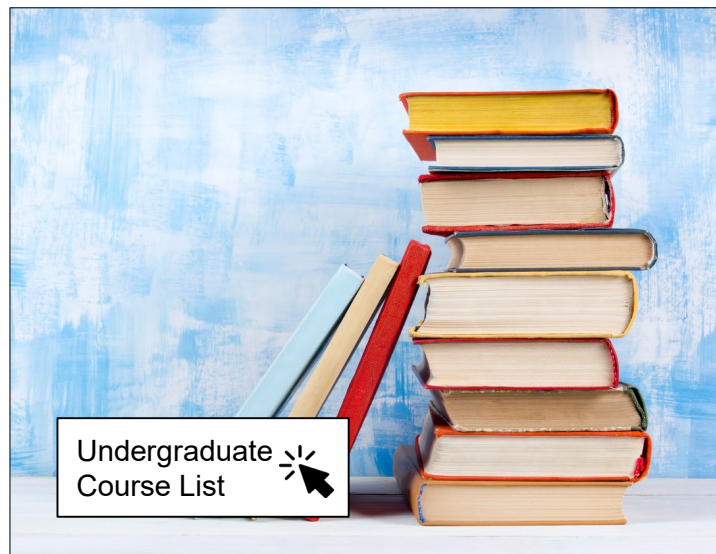


12 Colleges with 90+ programs

- Business Administration
- Agriculture and Life Sciences
- Art and Culture
- Social Sciences
- Biomedical Science
- Natural Sciences
- Art, Culture, and Engineering
- Animal Life Sciences
- Education
- Forest and Environmental Sciences
- Humanity College
- Information Technology(IT)

< Limited study fields >

Nursing, Medicine, Veterinary Science (Medicine), Pharmacy, Law



Courses taught in English and Korean

- You can check each semester's course list, and 50-60 courses taught in English are generally provided each semester.
- Example: If you are planning to study at KNU in the fall, you can refer to the most recent course list for the fall semester.

The list of courses for a new semester is updated in early February for spring and in early August for fall.



Recommended Courses

- We guarantee five to six courses taught in English every semester that are related to Korea such as **Korean history, Korean language, K-culture**, etc.

Required documents

Applicants can access the application system [K-Cloud] only after they are **nominated by their home university**.

STEP 1

Online Application

STEP 2



[Spring] by November 10

[Fall] by May 10

✘ All documents should be **prepared in English or Korean** and uploaded when an applicant does an online application.

1) **Certificate of Enrollment** [재학증명서] * **Must be certified by APOSTILLE or the embassy in your country**

2) **Transcript of Records** [성적증명서]

3) **Recommendation letter from Home University(professor or department)** [추천서]

4) **Copy of Passport** [여권 사본]

5) **Bank Statement Certificate** [재정증명서] * **1 semester: \$4,500 / 1 year : \$9,000**

Optional) Korean or English Language Proficiency Certificates [한국어 TOPIK 증명서 또는 영어 공인어학증명서]



STEP 3

Entry Survey after being accepted by the applicant's desired department of KNU

- Flight e-ticket, Medical check-list with the TB(chest x-ray) test result, dormitory application, etc.
- OIA will require to upload the documents to the KNU online system[K-Cloud] after a student receives an admission letter from KNU.



[Spring] early February

[Fall] early August

Friendly support programs



Airport Pick-up Service

- We offer a free airport pickup service for exchange students arriving in ChunCheon on a predetermined date.
- A KNU bus from Incheon Airport Terminal 1 drops off students at the dormitory once in the afternoon.



Buddy Program

- A KNU student(BUDDY) will be assigned to two or three exchange students so that exchange students can adjust to college life and Korean culture easier. Students can create lasting memories by assisting them with their studies and participating in various cultural activities.
- The Buddy Program is only for the first semester and the buddy's contact information will be sent to exchange students by email one month before the start of the semester.



Various Activities

- Orientation
- 1st Day at KNU for exchange students
- Wearing Hanbok(Korean traditional clothes) event
- ChunCheon City Tour
- KNU Festival 'Dae-dong-je' in Fall
- International food experience
- Flea market
- Farewell gathering

(subject to change)

Living in South Korea



Accommodation and meals


- There are two different types of lodging(two person or three person rooms) and all exchange students will be assigned to a dormitory. Due to the limited number of rooms available, there is no assurance that all students will be assigned to their preferred lodging. (No kitchen facilities)
- The Office of International Affairs processes a new student's dormitory application during the first semester only. Therefore, when students begin their studies at KNU, newly admitted students shouldn't worry about dormitory application.
- Although dorms are not equipped with kitchens, there are several cafes and cafeterias on campus and restaurants off campus. Campus cafeterias require students to purchase a meal ticket for each visit.





Estimated costs


- Dormitory fees (as of 2024)
 - One semester (4 months): \$600-\$700
 - Vacation (2 months): \$350-\$500
- Food costs
 - Campus meals: \$3-\$5
 - Korean / International food (off campus): \$6-\$13
 - Hamburger meals: \$5-\$8
 - Cafe drinks: \$2-\$4
- Health insurance premium : \$60 per month
- Transportation costs
 - Taxi fare in Chuncheon : \$3-\$6
 - Bus / Train fare (Chuncheon ↔ Seoul) : \$7-\$9



KNU Website (English) 

강원대 홈페이지 (Korean) 

江原大 官网 (Chinese) 

 **Korean Language Program**
(Fee paying, non-credit course)



 langcntr@kangwon.ac.kr

Division of Language Education(언어연수과)



ATTENTION



PLEASE

• **Note for course registration / 수강신청 유의사항**

Can I take any class that I want regardless of my major?

☞ An exchange student can take classes of various areas without any class registration limits, but one may not register for a class in the following cases. The Office of International Affairs(OIA) can not guarantee a student to take his/her desired courses.

- When it is impossible to register for the class as it is fully signed up (Registration for the class is first come first served basis!)
- When a professor asked a student to drop a class due to poor Korean skills
- When a student did not complete the prerequisite class for the relevant class
- When a students of other major tries to take a class exclusive to a certain major
- When a class is different from the general class in the form of experiment, practice, etc.

• **non-credit Korean language course**
(학점과 무관한) 한국어 연수과정

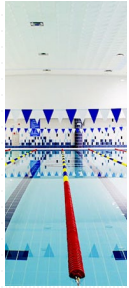
Students who want to take a non-credit language course must apply directly to the division of language education (언어연수과), not OIA. We recommend you to contact the person in charge and apply in advance in case the number of applicants exceed capacity.

• **Final semester**
마지막 학기 교환학생 - 권유 안함

Students who are planning to graduate directly from home university after spending their final semester at KNU are not eligible for the KNU exchange program.

• **National Health Insurance (NHI)**
국민건강보험 의무가입 제도

International students staying in Korea are subject to a mandatory subscription to NHI regardless of their personal insurance of home country. You are required to pay next month's insurance fee by the 25th of the previous month. (About \$60 per month)



OIA Contact

Office of International Affairs

Non-Asian section

Ms. Jinny Jang (장진희)

intn@kangwon.ac.kr ☎ 82-33-250-6989

Asian section

Ms. Chloe Yoon (윤자영)

intnknu@kangwon.ac.kr ☎ 82-33-250-6979

China (负责中国交换生的老师)

Ms. Da hae Jung (정다혜 郑多惠)

intnknu@kangwon.ac.kr ☎ 82-33-250-7193



Office of International Affairs, 1 Gangwondaehak-gil, Chuncheon-si, Gangwon state, Republic of Korea (Zip code 24341)
대한민국, 강원특별자치도 춘천시 강원대학길 1, 국제교류처 국제교류과 (우편번호 24341)